

Art gives you a new perspective

2019-2020 Calendar



Welcome to the 2019-2020 School Year!



On behalf of Shoreline Public Schools, I am delighted to welcome you to the 2019-2020 school year. It is our hope that students, families, staff and community members find this calendar of key district events, as well as other school information, helpful throughout the year.

We had an incredible school year in 2018-2019, full of amazing achievements and successes. I look forward to even more noteworthy accomplishments this year!

With help from wonderful partners, including the Shoreline Public Schools Foundation, Shoreline PTA Council, Shoreline-Lake Forest Park Arts Council, Center for Human Services and the cities of Shoreline and Lake Forest Park, as well as our outstanding community members and volunteers, our district is truly one of the most outstanding in the state.

Thank you for your support of our schools.

Dr. Rebecca Miner
Superintendent

Our Mission

The mission of Shoreline Public Schools is to provide a collaborative learning community which engages all students in learning the academic and work-life skills needed to achieve their individual potential and become responsible citizens.

Our Community Partners

Shoreline-Lake Forest Park Arts Council
18560 1st Ave. NE, Shoreline, 98155
206.417.4645
www.shorelinearts.net

Shoreline PTA Council
PO Box 55832, Shoreline, 98155
206.393.4916 www.shorelinepta.org

Shoreline Public Schools Foundation
18560 1st Ave. NE, Shoreline, 98155
206.393.4107
www.shorelinefoundation.org

Center for Human Services
17018 15th Ave NE, Shoreline, 98155
14803 15th Ave NE, Shoreline, 98155
206.362.7282
www.chs-nw.org

City of Lake Forest Park
17425 Ballinger Way NE, Lake Forest Park, 98155
206.368.5440
www.cityofflp.com

City of Shoreline
17500 Midvale Avenue N, Shoreline, WA 98133
206.801.2700
www.shorelinewa.gov

Special thanks to the Shoreline-LFP Arts Council and our student artists

The student artwork displayed within our calendar was selected from Youth Art Show entries in the annual Shoreline Arts Festival. The Shoreline-Lake Forest Park Arts Council, formed in 1989, is dedicated to providing quality arts programs throughout our communities and in our schools.



If you want to become involved or contribute to the work of the Arts Council, you may reach Lorie Hoffman, executive director, at 206.417.4645 or director@shorelinearts.net.

The 30th annual Shoreline Arts Festival will be held June 27-28, 2020 at Shoreline Community College.

The cover for this year's calendar, titled "Do You See What I See," was painted by Shorecrest High School student Julia Neils.



Julia Neils



Attendance is the Key to Success

Students who miss just a few days of school each month are at risk of not succeeding in school or career

Help your student get to school on time every day for a successful future.

Numerous studies have shown that good attendance is essential to academic success. Shoreline Public Schools is joining a nationwide effort to raise awareness about the value of regular school attendance and focus on reducing chronic absenteeism in the new school year.

Chronic absenteeism is described as missing 10 percent of the school year—about 18 days—for any reason, excused or unexcused. About 12 percent of Shoreline students were chronically absent this past school year. That's over 1,150 students!

Chronic absence can have consequences throughout a child's academic career, especially for those students living in poverty, who need school the most and are sometimes getting the least.

Children who are chronically absent in kindergarten and first grade are less likely to read proficiently by third grade, and students who don't read well by that critical juncture are more likely to struggle throughout elementary school. By middle school it's a warning sign that students will fail key classes and drop out of high school. A recent study found that students who were chronically absent in any year between 8th and 12th grade **were over seven times more likely** to drop out than students with better attendance.

To the right are tips you can use to help your student arrive to school on time every day. If there are barriers preventing your student from attending on time each day, please contact your school's office to connect with staff and resources that can help.

What You Can Do

- Set a regular bedtime and morning routine.
- Set out clothes and pack backpacks the night before.
- Find out what day school starts and make sure your child has the required shots.
- Introduce your child to her teachers and classmates before school starts to help them transition.
- Don't let your child stay home unless she is truly sick. Keep in mind complaints of a stomachache or headache can be a sign of anxiety and not a reason to stay home.
- If your child seems anxious about going to school, talk to teachers, school counselors or other parents for advice on how to make them feel comfortable and excited about learning.
- Develop back-up plans for getting to school if something comes up. Call on a family member, a neighbor or another parent.
- Avoid medical appointments and extended trips when school is in session.

Enrollment

Welcome to the Shoreline Public Schools. New students are encouraged to enroll immediately upon moving into the District. To find out the name and location of the school in your boundary area, please call the Public Information Office at 206.393.4412.

Enrollment is completed at the main office of the school your child will attend. A parent or legal guardian should accompany students when enrolling and bring:

- the student's immunization records;
- withdrawal form or report card from the last school attended; and
- proof of residency (such as a utility bill or tax statement).

Children enrolling in kindergarten for the 2020-2021 school year must be 5 years old on or before August 31, 2020. Kindergarten enrollment for the 2020-2021 school year begins February 1, 2020. When enrolling your child for kindergarten, please bring:

- proof of age (e.g. birth certificate or passport);
- health history, including immunization records;
- proof of residency (such as a utility bill, tax statement);
- parent or guardians' telephone (day and evening); and
- name, address, and phone number of child's doctor and dentist.

Immunization Requirements

Washington state law requires that all children up to the age of 21 be fully immunized on or before the first day of school. Shoreline requires that students must have proof of immunization or an approved Certificate of Exemption by the 30th calendar day after the first day of attendance. If no proof/waiver is received by the 30th day after the first day of attendance at school, the student may not continue to attend school until documents are received. For students who start on August 29, this means October 1 is the last day they can attend without being in compliance.

A student may be exempted from these requirements for medical, religious or philosophical reasons. The law requires a physician's signature for those wishing to exempt for medical or philosophical reasons; or proof of membership in a religious group that does not allow a healthcare practitioner to provide medical treatment to a child is required for those claiming a religious exemption.

Expectations of Students

When students come to our schools we expect them to be honest, respectful and responsible.

We place a high priority on school attendance and participation in classroom and school activities. Students should be prompt, work hard, stay on task, have a positive attitude and be involved.

The "Statement of Responsibilities and Rights of Students" handbook is provided to every district family each year with this calendar. You may also find the handbook in English and seven other languages on our website at: www.shorelineschools.org/schoolboard.

When Your Child is Absent

Please notify the school when your child is going to be absent.

As the parent or legal guardian of a school-age child, you are legally responsible for your child's school attendance. Under the Washington State Truancy/Compulsory Attendance Act, your child must be in school, unless you have provided a note in writing for an excused absence. If the absence is unplanned (e.g. illness), it is the school's preference that it receive a telephone call from the parent the night prior to or the morning of the child's absence and follow that with a written note when the child returns to school.

Please use the following codes when reporting your child absent:

HA: Asthma - Wheezing, Short of Breath

HD: Dental Condition/Appointment

HF: Cold or Flu - Fever, Body Aches, Sore Throat

HH: Headache

HI: Injury/Accident

HM: Medical Appointment

HO: Other Health Condition

HR: Rash - Red Spots, Fever, Chills

HS: Stomach Symptom - Nausea, Vomiting, Diarrhea

Start and End Times

School/Grades	Starting Time	Dismissal Time	Early Release Time
Briarcrest Elementary Grades K-6	8:40 am	3:00 pm	1:20 pm
Brookside Elementary Grades K-6	9:10 am	3:30 pm	1:50 pm
Cascade K-8 Community School Grades K-8	9:10 am	3:30 pm	1:50 pm
Echo Lake Elementary Grades K-6	9:10 am	3:30 pm	1:50 pm
Highland Terrace Elementary Grades K-6	9:10 am	3:30 pm	1:50 pm
Lake Forest Park Elementary Grades K-6	9:10 am	3:30 pm	1:50 pm
Meridian Park Elementary Grades K-6	9:10 am	3:30 pm	1:50 pm
North City Kindergarten Program Grades K	8:40 am	3:00 pm	1:20 pm
Parkwood Elementary Grades K-6	8:40 am	3:00 pm	1:20 pm
Ridgecrest Elementary Grades K-6	8:40 am	3:00 pm	1:20 pm
Syre Elementary Grades K-6	9:10 am	3:30 pm	1:50 pm
Einstein Middle School Grades 7 & 8	8:30 am	3:00 pm	1:20 pm
Kellogg Middle School Grades 7 & 8	8:30 am	3:00 pm	1:20 pm
Shorecrest High School Grades 9-12	7:50 am	2:35 pm	12:55 pm
Shorewood High School Grades 9-12	7:50 am	2:35 pm	12:55 pm
Edwin Pratt Early Learning Center Office Hours: 6:30 am - 6:30 pm Shoreline Children's Center, Head Start and Early Childhood Education			
Extended Day Program (at each elementary school) K-6	6:30 am	6:30 pm	

Food and Nutrition

The Food and Nutrition Services team works together to develop healthy and appetizing meals for students. The menus are analyzed and recipes adjusted to ensure they meet USDA nutrition guidelines. Lunch and breakfast are available at all schools. Free/reduced price meals are available for those students who qualify. For more information, visit the Food and Nutrition Services website, shorelineschools.org/foodservices, call 206.393.4209, or e-mail: nutrition.services@shorelineschools.org.



The Food and Nutrition Services Office, Central Kitchen and Warehouse are located at 2003 NE 160th St. in Shoreline.

Meal regular prices:

	Breakfast	Lunch
Grades K-6:	\$1.85	\$3.35
Grades 7-12:	\$2.05	\$3.60

Transportation

Information about Shoreline Schools bus routes is available through e-Link on the district website at www.shorelineschools.org/transportation or call the Transportation Department at 206.393.4277. The Transportation Office is located at 1216 NE 165th St. in Shoreline.



Half Day Release Times for All Schools on November 27 and June 18

10:40 am- SC and SW 11:15 am- EIN, KEL, BC, PW, NC and RC

11:45 am- BKS, CK8, EL, HT, LFP, MP, SY

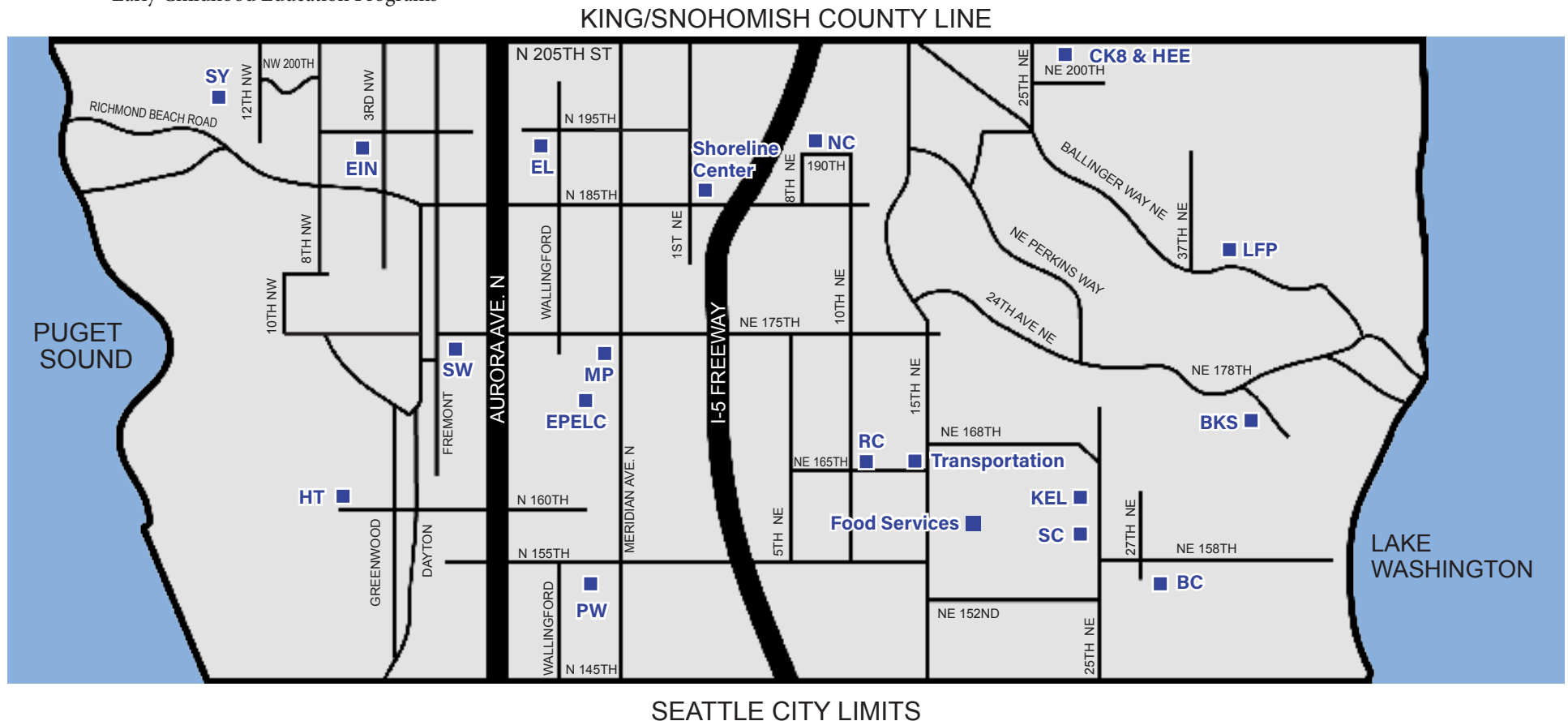
District Building Map

School/Program Abbreviations:

BC - Briarcrest Elementary
BKS - Brookside Elementary
CK8 - Cascade K-8 Community School
EIN - Einstein Middle School
EL - Echo Lake Elementary
EPELCC - Edwin Pratt Early Learning Center
 Shoreline Children's Center, Head Start and
 Early Childhood Education Programs

HEE - Home Education Exchange
HT - Highland Terrace Elementary
KEL - Kellogg Middle School
LFP - Lake Forest Park Elementary
MP - Meridian Park Elementary
NC - North City Kindergarten Program

PW - Parkwood Elementary
RC - Ridgecrest Elementary
SC - Shorecrest High School
SW - Shorewood High School
SY - Syre Elementary



In the spring of 1944, when the Shoreline School District was officially formed, a contest was held to give the new district a proper name. Fifth grader Marilyn Buckner submitted the winning suggestion. She said that since the district would stretch from Puget Sound to Lake Washington, and from the Seattle city limits to the King-Snohomish County line, that is “shore to shore and line to line,” the new district should be called “Shoreline.”

School District Building Directory

Elementary Schools (K-6)

Briarcrest Elementary School

2715 NE 158th St., Shoreline 98155

Main office: 206.393.4170

Principal: Jonathan Nesson

Brookside Elementary School

17447 37th Ave. NE, Lake Forest Park 98155

Main office: 206.393.4140

Principal: John Simard

Echo Lake Elementary School

19345 Wallingford Ave. N, Shoreline 98133

Main office: 206.393.4338

Principal: Andrew Lohman

Highland Terrace Elementary School

100 N 160th St., Shoreline 98133

Main office: 206.393.4341

Principal: Lara Drew

Lake Forest Park Elementary School

18500 37th Ave. NE, Lake Forest Park 98155

Main office: 206.393.4130

Principal: Aimee Miner

Meridian Park Elementary School

17077 Meridian Ave. N, Shoreline 98133

Main office: 206.393.4251

Principal: David Tadlock

North City Kindergarten Program

816 NE 190th St., Shoreline 98155

Main office: 206.393.4262

Principal: Dr. Rosa Cabrera

Parkwood Elementary School

1815 N. 155th St., Shoreline 98133

Main office: 206.393.4150

Principal: Ann Torres

Ridgecrest Elementary School

16516 10th Ave. NE, Shoreline 98155

Main office: 206.393.4272

Principal: Elizabeth Nunes

Syre Elementary School

19545 12th Ave. NW, Shoreline 98177

Main office: 206.393.4165

Principal: Michelle Carroll

K-8 School

Cascade K-8 Community School

2800 NE 200th St., Shoreline 98155

Main office: 206.393.4180

Principal: Chrisy Francescutti

Middle Schools (7-8)

Einstein Middle School

19343 Third Ave. NW, Shoreline 98177

Main office: 206.393.4730

Attendance: 206.393.4732

Principal: Nyla Fritz

Asst. Principal: Rebbecah Emanuel

Kellogg Middle School

16045 25th Ave. NE, Shoreline 98155

Main office: 206.393.4783

Attendance: 206.393.4781

Principal: Heather Hiatt

Asst. Principal: Casey Campbell

High Schools (9-12)

Shorecrest High School

15343 25th Ave. NE, Shoreline 98155

Main office: 206.393.4286

Attendance: 206.393.4294

Principal: Lisa Gonzalez

Asst. Principals: Becky Worrell, TBD

Shorewood High School

17300 Fremont Ave. N, Shoreline 98133

Main office: 206.393.4372

Attendance: 206.393.4378

Principal: Bill Dunbar

Asst. Principals: Nancy Elder, Elaine Swanson

Home Education

Home Education Exchange (K-8)

2800 NE 200th St., Shoreline 98155

Main office: 206.393.3388

Coordinator: Ron Jones

Pre-K/Extended Day

Edwin Pratt Early Learning Center

1900 N. 177th St., Shoreline, WA 98133

Main office: 206.393.4256

Director: Kelly Davidson

Early Childhood Special Education, OT/PT and Head Start

1900 N. 177th St., Shoreline, WA 98133

Main Office: 206.393.4250

Director: Hillery Clark

District Offices

Shoreline Center

18560 1st Ave NE, Shoreline 98155

Public Information: 206.393.4412

Superintendent: Rebecca Miner

Food and Nutrition/Central Kitchen/Warehouse

2003 NE 160th St., Shoreline 98155

Main Office: 206.393.4209

Director: Jessica Finger

Transportation Office

1216 NE 165th St., Shoreline 98155

Main Office: 206.393.4277

Director: Mary Sherman

Procedures for Emergency Schedule Changes

In the event of a school delay or cancellation, families will be contacted by phone and/or email using our mass notification system. Please ensure that your contact information is up-to-date at your student's school.

You may find school delay/cancellation announcements on local television and radio stations, by calling our information line at 206.393.6111 or online at: www.shorelineschools.org, www.facebook.com/shorelineschools, or www.twitter.com/shorelinek12.

THE FOLLOWING OPTIONS MAY BE USED FOR EMERGENCY CONDITIONS:

1. SHORELINE SCHOOLS ARE CLOSED

All schools will be closed for the day. All meetings, field trips, after-school activities, etc. will be canceled for the day.

2. SHORELINE SCHOOLS OPEN - 2 HOURS LATE - BUSES OPERATING ON REGULAR or SNOW ROUTES

- a. All zero period secondary classes will be canceled.
- b. K-12 and Head Start classes will begin 2 HOURS LATE.
- c. AM Early Childhood Program, STEP Preschool, and out-of-district transportation will be CANCELED.
- d. PM Early Childhood will begin at REGULAR TIMES.
- e. When schools open 2 hours late, the Shoreline Children's Center and Extended Day sites will open 2 hours late, at 8:30 a.m. instead of 6:30 a.m. Preschool classrooms scheduled to begin at 8:45, 9:00 am, or 1:00 pm will start at normal times.

SNOW ROUTES:

Snow routes have been designed to avoid areas where hazardous road conditions exist. You can find snow routes on the Transportation Department webpages at www.shorelineschools.org. When snow routes are in effect, they will be used on both the morning and afternoon routes even if roads have cleared. There may be occasions when schools start at the regular times but "snow routes" will be utilized.

EMERGENCY DISMISSAL:

If it becomes necessary to close a school during the school day and send students home early, our mass notification system will be used to contact families by phone and/or email. A message will also be placed on the District homepage and social media accounts. Because a parent/guardian may not be at home if there is an emergency dismissal, they must make plans for an alternate place (neighbor/relative) for their child to go. Families should keep their emergency contacts up-to-date and discuss this alternate plan with their children so they know what to do in case of an emergency closure of schools. There will be no after school extended care.

If someone other than the parent will be picking up the child, parents should have already provided the school with the names of the individuals who are authorized to pick up the child. Unless an approved person picks up the child, the child will remain at school until the announced dismissal time.

It may be necessary in some situations to close schools early and hold students at school until a parent (or authorized person) comes to the school to pick them up. In this case, there will be an announcement that students are being held at school and will not be sent home.

Shoreline School Board

Meeting Schedule



L-R: Dick Potter, Mike Jacobs, Heather Fralick, David Wilson and Dick Nicholson

The Shoreline School Board is a local governance board established by the Washington State Legislature. Although each of the five members comes from a different geographical area in the District, each board member is elected by all Shoreline and Lake Forest Park voters. Board members serve a four-year term. The Board's primary task is to formulate and evaluate all policies necessary for the operation of the school district. The Board's legal responsibilities are to:

- establish general policy for the school district;
- adopt and revise the annual operating budget;
- select the Superintendent of Schools;
- employ school personnel upon the recommendation of the Superintendent;
- exercise the power to administer schools conferred by the state Legislature; and
- keep the public informed on the needs and progress of the education system.

Community members are encouraged to attend school board meetings. Meeting dates are listed in this calendar and on the district website at: www.shorelineschools.org.

August 26, 2019 at 7:00 pm

September 9, 2019 at 7:00 pm

September 23, 2019 at 7:00 pm

October 7, 2019 at 7:00 pm

October 21, 2019 at 7:00 pm

November 4, 2019 at 7:00 pm

November 18, 2019 at 7:00 pm

December 9, 2019 at 7:00 pm

January 13, 2020 at 7:00 pm

January 27, 2020 at 7:00 pm

February 10, 2020 at 7:00 pm

March 2, 2020 at 7:00 pm

March 16, 2020 at 7:00 pm

March 30, 2020 at 7:00 pm

April 13, 2020 at 7:00 pm

May 4, 2020 at 7:00 pm

May 18, 2020 at 7:00 pm

June 1, 2020 at 7:00 pm

June 15, 2020 at 7:00 pm

KELLOGG MIDDLE SCHOOL
PTSA



Shoreline Council

PTA



advocate • communicate • educate • collaborate

Shoreline PTA Council 6.12

Advocate, Communicate, Educate, Collaborate
www.shorelinepta.org email: shorelinepta@gmail.com



Preschool

Edwin Pratt Early Learning Center PTA: <https://www.edwinprattpta.org>

Elementary

Briarcrest Elementary PTA: <http://briarcrestpta.ourschoolpages.com>

Brookside Elementary PTA: <http://brooksidepta.org>

Cascade K-8 PTA: <http://www.cascadek8ptsa.org>

Echo Lake Elementary PTA: <http://echolake.ourschoolpages.com>

Highland Terrace Elementary PTA: <http://www.highlandterracepta.org>

Lake Forest Park Elementary PTA: <http://www.lfppta.org>

Meridian Park Elementary PTSA: <https://mpptsa.org>

Parkwood Elementary PTA: <http://parkwoodpta.org>

Ridgecrest Elementary PTA: <http://ridgecrestpta.org>

Syre Elementary PTA: <http://syrepta.org>

Middle School

Einstein Middle School PTSA: <https://www.einsteinmiddleschoolpta.org>

Kellogg Middle School PTSA: <http://www.kelloggpta.org>

High School

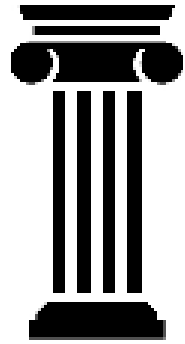
Shorecrest High School PTSA: <http://www.shorecrestpta.org>

Shorewood High School PTSA: <http://www.shorewoodpta.com>

Special Education

Shoreline Special Needs PTSA: <http://shorelinespecialneedspta.org>





Shoreline Public Schools Foundation

PROMOTING LEARNING, SUPPORTING STUDENTS

The Shoreline Public Schools Foundation raises funds to support academic excellence and expanded learning opportunities for all students in Shoreline Public Schools.

The Foundation works directly with administrators and teachers to support the District's most crucial areas of learning, so every student achieves his/her full potential.

WANT TO LEARN MORE?

Visit: shorelinefoundation.org

Call: 206-393-4107

YOUR SUPPORT COUNTS!

Fall Campaign: September 1- November 1

Giving Tuesday: December 3

Spring Event: March 26

Board Meeting Dates

Sept. 17, 2019

Oct. 15, 2019

Nov. 19, 2019

Dec. 17, 2019

Jan. 21, 2020

Feb. 25, 2020

Mar. 17, 2020

Apr. 28, 2020

May 19, 2020

June 16, 2020

DONATE TODAY



"Do You See What I See" by Julia Neils
Shorecrest High School

September

"I dream my painting and I paint
my dream." -Vincent van Gogh

SUNDAY	MONDAY	TUESDAY	WEDNESDAY	THURSDAY	FRIDAY	SATURDAY
1	2 Labor Day	3	4 First Day of School for Grades 1-12	5	6	7
8	9 First Day of School for Kindergarten School Board Meeting 7 pm Ashura thru 9/10	10	11 Early Release Day Patriot Day	12	13	14
15	16	17 Constitution and Citizenship Day	18 Early Release Day	19	20	21
22	23 School Board Meeting 7 pm First Day of Autumn	24	25 Early Release Day	26	27 Rotary Cup Football Game 7 pm at Shoreline Stadium	28
29 Rosh Hashanah thru 10/1	30	1	2 Early Release Day	3	4	5

September Notes:

AUGUST

S	M	T	W	T	F	S
				1	2	3
4	5	6	7	8	9	10
11	12	13	14	15	16	17
18	19	20	21	22	23	24
25	26	27	28	29	30	31

OCTOBER

S	M	T	W	T	F	S
		1	2	3	4	5
6	7	8	9	10	11	12
13	14	15	16	17	18	19
20	21	22	23	24	25	26
27	28	29	30	31		



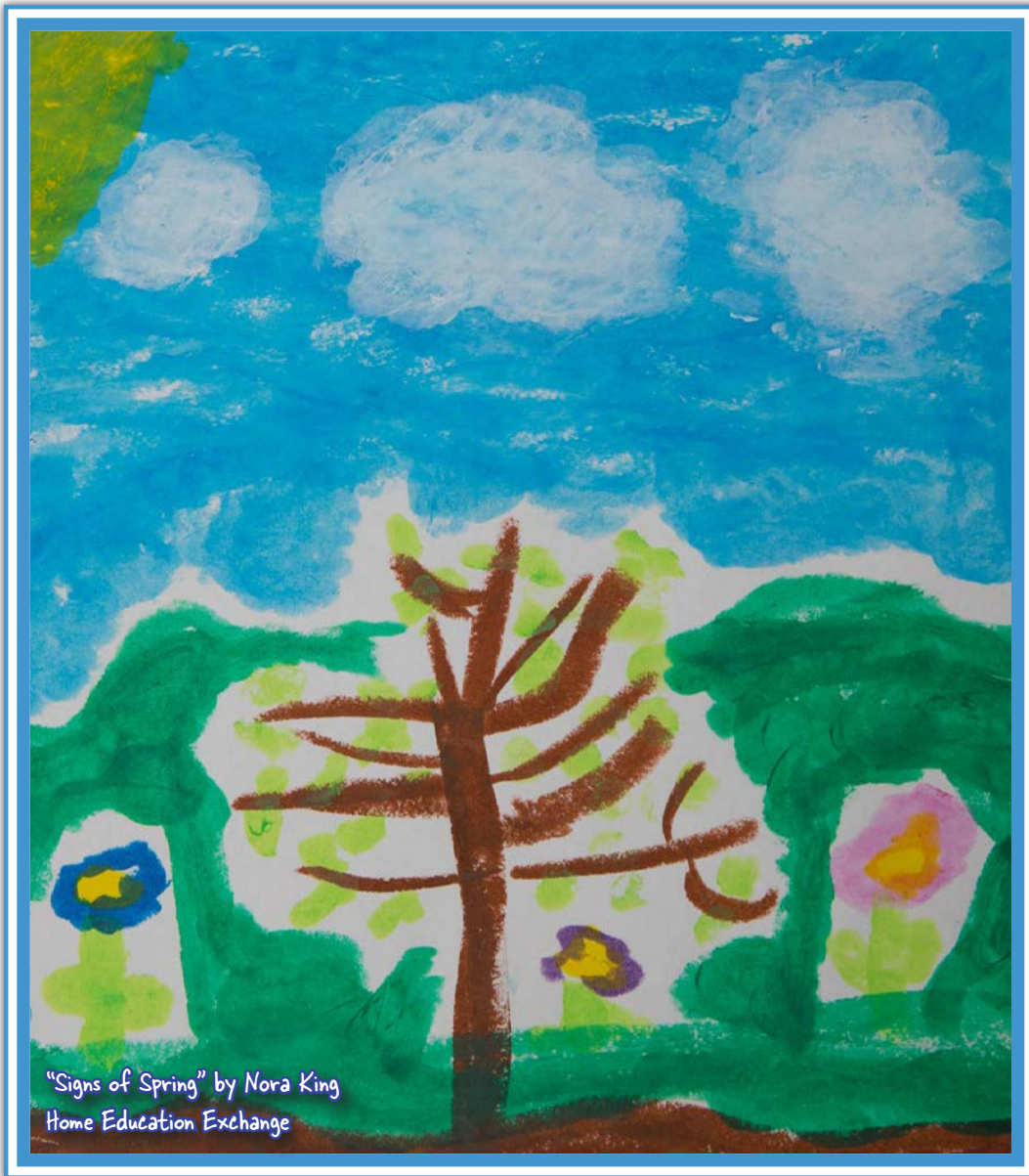
18560 1st Ave. NE
Shoreline, WA 98155
Phone: 206.393.6111
Fax: 206.393.4204
shorelineschools.org



Attendance Matters
On Time, Every Day
#ShorelineEveryDay

6

7



October

"Coloring outside the lines is a fine art" -Kim Nance

SUNDAY	MONDAY	TUESDAY	WEDNESDAY	THURSDAY	FRIDAY	SATURDAY
29	30 **At the time of printing, conference dates for K-6 had not yet been determined. Dates will be communicated to families when set.**	1	2 Early Release Day	3	4	5
6	7 School Board Meeting 7 pm Shorecrest Homecoming Week - Check Website for Athletic & Event Schedules	8 Yom Kippur thru 10/9	9 Early Release Day	10	11	12
13 Sukkot thru 10/20	14 Shorewood Homecoming Week - Check Website for Athletic & Event Schedules National School Lunch Week	15	16 Early Release Day	17	18	19
20 Shemini Atzeret thru 10/21	21 School Board Meeting 7 pm Simchat Torah thru 10/22	22	23 Early Release Day	24	25	26 Make a Difference Day
27 Diwali	28	29	30 Early Release Day	31 Halloween	1	2

October Notes:

SEPTEMBER

S	M	T	W	T	F	S
1	2	3	4	5	6	7
8	9	10	11	12	13	14
15	16	17	18	19	20	21
22	23	24	25	26	27	28
29	30					

NOVEMBER

S	M	T	W	T	F	S
					1	2
3	4	5	6	7	8	9
10	11	12	13	14	15	16
17	18	19	20	21	22	23
24	25	26	27	28	29	30

3

4
School Board Meeting 7 pm



18560 1st Ave. NE
Shoreline, WA 98155
Phone: 206.393.6111
Fax: 206.393.4204
shorelineschools.org



Attendance Matters
On Time, Every Day
#ShorelineEveryDay

"Water Way" by Ava Hernandez
Meridian Park Elementary School



"The Tree of Autumn" by Francheska Luong
Parkwood Elementary School

November

"The world always seems brighter when you've just made something that wasn't there before." -Neil Gaiman

SUNDAY	MONDAY	TUESDAY	WEDNESDAY	THURSDAY	FRIDAY	SATURDAY
27	28	29	30	31	1	2
3 Standard Time	4 School Board Meeting 7 pm	5 Election Day - Go Vote!	6 Early Release Day	7	8 End of 1st Quarter (secondary)	9
10	11 No School Veterans Day	12	13	14 Shorewood Fall Play 7 pm Shorecrest Fall Play 7:30 pm	15 Shorewood Fall Play 7 pm Shorecrest Fall Play 7:30 pm	16 Shorewood Fall Play 7 pm Shorecrest Fall Play 7:30 pm
17 Shorecrest Fall Play 2 pm	18 School Board Meeting 7 pm	19 Shorecrest Benefit Dinner 6 pm	20 Early Release Day	21 Shorewood Fall Play 7 pm Shorecrest Fall Play 7:30 pm	22 Shorewood Fall Play 7 pm Shorecrest Fall Play 7:30 pm	23 Shorewood Fall Play 7 pm Shorecrest Fall Play 7:30 pm
24 Shorecrest Fall Play 2 pm	25	26	27 Half Day Release	28 No School Thanksgiving Break Thanksgiving	29 No School Thanksgiving Break Native American Heritage Day	30

November Notes:

OCTOBER

S	M	T	W	T	F	S
		1	2	3	4	5
6	7	8	9	10	11	12
13	14	15	16	17	18	19
20	21	22	23	24	25	26
27	28	29	30	31		

DECEMBER

S	M	T	W	T	F	S
1	2	3	4	5	6	7
8	9	10	11	12	13	14
15	16	17	18	19	20	21
22	23	24	25	26	27	28
29	30	31				

1	2
---	---

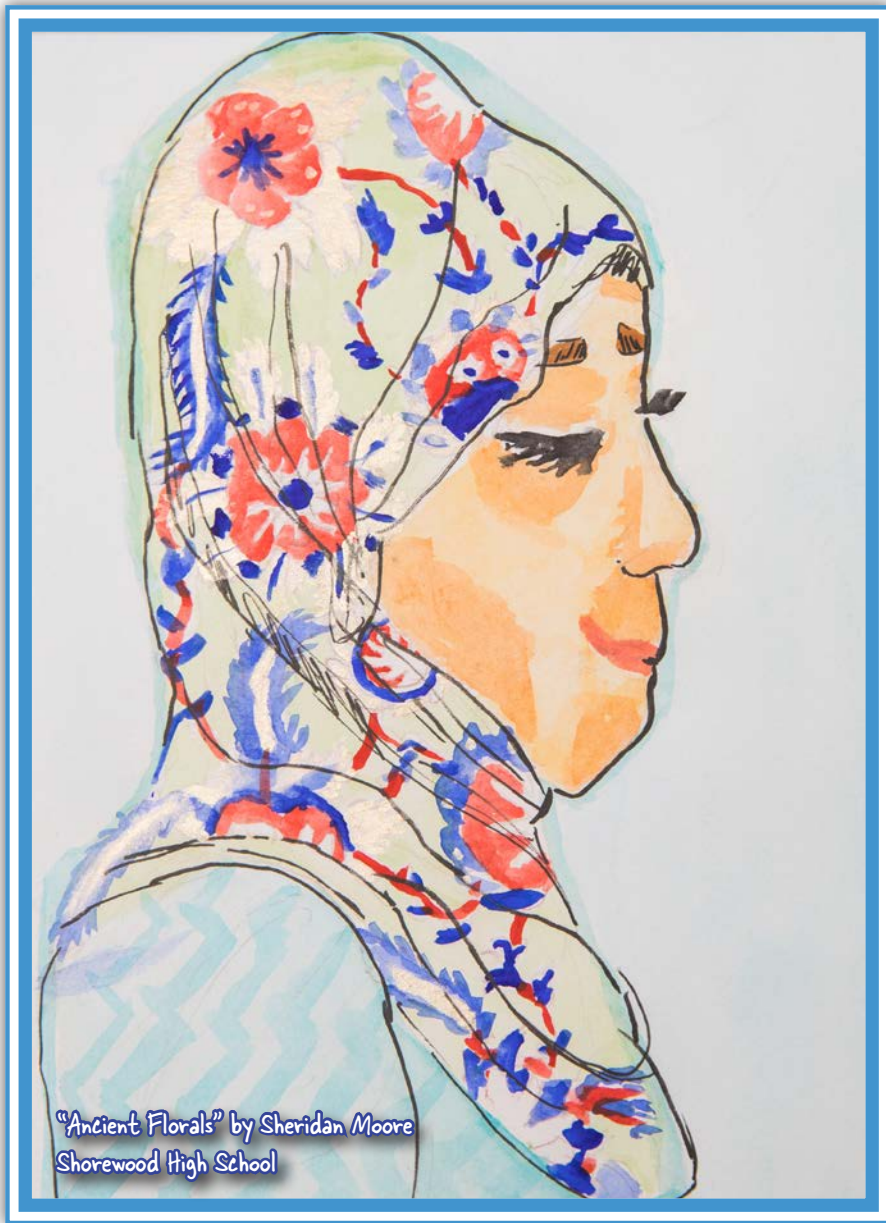
SHORELINE

PUBLIC SCHOOLS

18560 1st Ave. NE
 Shoreline, WA 98155
 Phone: 206.393.6111
 Fax: 206.393.4204
shorelineschools.org



Attendance Matters
 On Time, Every Day
#ShorelineEveryDay



December

*"Art must be life – it must belong
to everybody."
-Marina Abramović*

SUNDAY MONDAY TUESDAY WEDNESDAY THURSDAY FRIDAY SATURDAY

December Notes:

1	2 Holiday Baskets Food and Teen Gift Drive thru Dec. 13	3	4 Early Release Day	5	6	7 Pearl Harbor Remembrance Day
8	9 School Board Meeting 7 pm	10	11 Early Release Day	12	13	14 Holiday Baskets Distribution at Kellogg Middle School
15	16	17	18 Early Release Day	19	20	21 First Day of Winter
22 Hanukkah thru 12/30	23 No School Winter Break	24 No School Winter Break	25 No School Winter Break Christmas	26 No School Winter Break Kwanzaa thru 1/1	27 No School Winter Break	28
29	30 No School Winter Break	31 No School Winter Break New Year's Eve	1 No School Winter Break New Year's Day	2 No School Winter Break	3 No School Winter Break	4

NOVEMBER

S	M	T	W	T	F	S
					1	2
3	4	5	6	7	8	9
10	11	12	13	14	15	16
17	18	19	20	21	22	23
24	25	26	27	28	29	30

JANUARY

S	M	T	W	T	F	S
			1	2	3	4
5	6	7	8	9	10	11
12	13	14	15	16	17	18
19	20	21	22	23	24	25
26	27	28	29	30	31	

5
6

SHORELINE

PUBLIC SCHOOLS

18560 1st Ave. NE
 Shoreline, WA 98155
 Phone: 206.393.6111
 Fax: 206.393.4204
 shorelineschools.org



Attendance Matters
 On Time, Every Day
#ShorelineEveryDay



January

"Everything you can imagine is real."

-Pablo Picasso

January Notes:


DECEMBER

S	M	T	W	T	F	S
1	2	3	4	5	6	7
8	9	10	11	12	13	14
15	16	17	18	19	20	21
22	23	24	25	26	27	28
29	30	31				

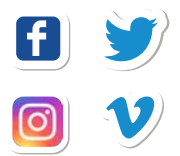
FEBRUARY

S	M	T	W	T	F	S
						1
2	3	4	5	6	7	8
9	10	11	12	13	14	15
16	17	18	19	20	21	22
23	24	25	26	27	28	29

SUNDAY	MONDAY	TUESDAY	WEDNESDAY	THURSDAY	FRIDAY	SATURDAY
29	30 No School Winter Break	31 No School Winter Break	1 No School Winter Break	2 No School Winter Break	3 No School Winter Break	4 Shoreline Wrestling Invite 8:30 am at Shorecrest
5	6	7	8 Early Release Day	9	10	11
12	13 School Board Meeting 7 pm	14	15 Early Release Day Shoreline PTA Reflections Reception at Shoreline Center 6:30-8:00 pm	16 Temperance and Good Citizenship Day	17	18
19	20 No School Dr. Martin Luther King, Jr. Day	21 Westside Band Festival at Shorewood 7 pm	22	23	24	25 Kinderfest 10am-12pm at the Shoreline Center Shoreline Hoopapalooza at Shorewood Lunar New Year
26	27 School Board Meeting 7 pm	28	29	30 Eastside Singfest Shorecrest at 7 pm Westside Choral Festival Shorewood at 7 pm End of 1st Semester (elem.) End of 2nd Quarter (secondary)	31 No School Staff Work Day	1
2	3					

SHORELINE

PUBLIC SCHOOLS

18560 1st Ave. NE
Shoreline, WA 98155
Phone: 206.393.6111
Fax: 206.393.4204
shorelineschools.org



Attendance Matters
On Time, Every Day
#ShorelineEveryDay



"Snowstorm in a Rainbow" by Keegan Davison
Echo Lake Elementary School



"Happy Little Penguin" by Serena Strobe
Syre Elementary School

February

"Art evokes the mystery without
which the world would not exist."
-Renée Magritte

February Notes:

SUNDAY	MONDAY	TUESDAY	WEDNESDAY	THURSDAY	FRIDAY	SATURDAY	
26	27 School Board Meeting 7 pm	28	29	30	31	1	
2	3 Eastside Band Festival at Shorecrest 7 pm	4 Kindergarten Open Enrollment thru 2/28	5 Early Release Day Westside Orchestra Festival at Shorewood 7:30 pm	6	7	8	
9	10 School Board Meeting 7 pm	11 Eastside Orchestra Festival at Shorecrest 7:30 pm	12 Early Release Day	13	14 Valentine's Day	15	
16	17 No School President's Day	18 No School Mid-Winter Break	19 No School Mid-Winter Break	20 No School Mid-Winter Break	21 No School Mid-Winter Break	22	
23	24	25	26 Early Release Day	27	28	29 Yes, it's a leap year!	
1	2 School Board Meeting 7 pm	 <p>SHORELINE PUBLIC SCHOOLS</p>					<p>18560 1st Ave. NE Shoreline, WA 98155 Phone: 206.393.6111 Fax: 206.393.4204 shorelineschools.org</p>



Attendance Matters
On Time, Every Day
#ShorelineEveryDay

JANUARY

S	M	T	W	T	F	S
			1	2	3	4
5	6	7	8	9	10	11
12	13	14	15	16	17	18
19	20	21	22	23	24	25
26	27	28	29	30	31	

MARCH

S	M	T	W	T	F	S
1	2	3	4	5	6	7
8	9	10	11	12	13	14
15	16	17	18	19	20	21
22	23	24	25	26	27	28
29	30	31				



"Girl Power" by Taylor Draper
Lake Forest Park Elementary School

March

*"Life shrinks or expands in proportion
to one's courage"*

-Anain Nin

SUNDAY	MONDAY	TUESDAY	WEDNESDAY	THURSDAY	FRIDAY	SATURDAY
1	2 School Board Meeting 7 pm SEED Social Justice Conference National School Breakfast Week	3 Shoreline PTA Summer Camp & After-School Activities Resource Fair at Shoreline Center 7-9 pm	4 Early Release Day	5	6	7
8 International Women's Day Daylight Savings Time	9 Education Support Professionals and Classified Staff Appreciation Week Purim thru 3/10	10	11 Early Release Day	12	13	14
15	16 School Board Meeting 7 pm	17	18 Early Release Day	19 LGBTQ & Allies Potluck Dinner at Shoreline Center 5:30-7:30 pm First Day of Spring	20	21
22	23	24	25 Early Release Day	26	27	28
29	30 School Board Meeting 7 pm	31	1 Early Release Day	2	3	4

March Notes:

FEBRUARY

S	M	T	W	T	F	S
						1
2	3	4	5	6	7	8
9	10	11	12	13	14	15
16	17	18	19	20	21	22
23	24	25	26	27	28	29

APRIL

S	M	T	W	T	F	S
			1	2	3	4
5	6	7	8	9	10	11
12	13	14	15	16	17	18
19	20	21	22	23	24	25
26	27	28	29	30		

5	6
---	---

SHORELINE

PUBLIC SCHOOLS 18560 1st Ave. NE
 Shoreline, WA 98155
 Phone: 206.393.6111
 Fax: 206.393.4204
shorelineschools.org



Attendance Matters
 On Time, Every Day
 #ShorelineEveryDay



April

"In the mind of every artist there is a masterpiece." -Kai Greene

April Notes:

SUNDAY	MONDAY	TUESDAY	WEDNESDAY	THURSDAY	FRIDAY	SATURDAY
29	30 School Board Meeting 7 pm	31	1 Early Release Day Shorewood Spring Musical 7 pm	2 Shorewood Spring Musical 7 pm	3 Shorewood Spring Musical 7 pm	4 Shorewood Spring Musical 7 pm
5	6	7	8 Early Release Day Shorewood Spring Musical 7 pm Passover thru 4/16	9 Shorewood Spring Musical 7 pm	10 Shorewood Spring Musical 7 pm End of 3rd Quarter (secondary)	11 Shorewood Spring Musical 7 pm
12 Easter	13 School Board Meeting 7 pm	14	15 Early Release Day	16 Shoreline PTA Recognition Dinner 6:00-8:30 pm	17	18
19	20 No School Spring Break	21 No School Spring Break	22 No School Spring Break Earth Day	23 No School Spring Break Ramadan thru 5/23	24 No School Spring Break Arbor Day	25
26	27	28	29 Early Release Day	30	1	2
3	4 School Board Meeting 7 pm					

MARCH
 S M T W T F S
 1 2 3 4 5 6 7

8 9 10 11 12 13 14
 15 16 17 18 19 20 21
 22 23 24 25 26 27 28
 29 30 31

MAY
 S M T W T F S
 1 2
 3 4 5 6 7 8 9
 10 11 12 13 14 15 16
 17 18 19 20 21 22 23
 24 25 26 27 28 29 30
 31

SHORELINE

PUBLIC SCHOOLS

18560 1st Ave. NE
 Shoreline, WA 98155
 Phone: 206.393.6111
 Fax: 206.393.4204
shorelineschools.org



Attendance Matters
 On Time, Every Day
#ShorelineEveryDay



"Butterflies" by Elena Bronsther
Echo Lake Elementary School



"Create Your Own Sunshine" by Mei Shumway
Einstein Middle School

May

"If you ask me what I came to do in this world, I, an artist, will answer you: I am here to live out loud." -Émile Zola

SUNDAY MONDAY TUESDAY WEDNESDAY THURSDAY FRIDAY SATURDAY

26	27	28	29	30	1	2 Shoreline Track and Field Invitational at Shoreline Stadium
3	4 Teacher and Certificated Staff Appreciation Week School Board Meeting 7 pm	5	6 Early Release Day	7 Shorecrest Spring Musical 7:30 pm	8 Shorecrest Spring Musical 7:30 pm	9 Shorecrest Spring Musical 7:30 pm
10 Shorecrest Spring Musical 2 pm Mother's Day	11	12 Staff of the Year Awards 6 pm at Shorecrest	13 Early Release Day	14 Shorecrest Spring Musical 7:30 pm	15 Shorecrest Spring Musical 7:30 pm	16 Shorecrest Spring Musical 7:30 pm
17 Shorecrest Spring Musical 2 pm	18 School Board Meeting 7 pm	19	20 Early Release Day	21	22	23 Eid-al-Fitr thru 5/24
24	25 No School Memorial Day	26	27	28 Staff Retirement Celebration 6 pm at Shorewood Shavuot thru 5/30	29	30
31	1 School Board Meeting 7 pm					

May Notes:

APRIL						
S	M	T	W	T	F	S
			1	2	3	4
5	6	7	8	9	10	11
12	13	14	15	16	17	18
19	20	21	22	23	24	25
26	27	28	29	30		

JUNE						
S	M	T	W	T	F	S
	1	2	3	4	5	6
7	8	9	10	11	12	13
14	15	16	17	18	19	20
21	22	23	24	25	26	27
28	29	30				

SHORELINE

PUBLIC SCHOOLS

18560 1st Ave. NE
 Shoreline, WA 98155
 Phone: 206.393.6111
 Fax: 206.393.4204
shorelineschools.org



Attendance Matters
 On Time, Every Day
#ShorelineEveryDay







"Milky Way House" by Maya Madlon
Ridgecrest Elementary School



"Community" by Sadie McArthur
Shorewood High School

June

*"A picture is a poem without words."
-Horace*

SUNDAY	MONDAY	TUESDAY	WEDNESDAY	THURSDAY	FRIDAY	SATURDAY
31	1 School Board Meeting 7 pm	2	3 Early Release Day	4	5	6
7	8 No School Staff Work Day	9	10	11	12	13
14 Graduation Ceremonies at Angel of the Winds Arena in Everett Shorecrest 2 pm Shorewood 6 pm	15 School Board Meeting 7 pm	16	17	18 Anticipated Last Day of School Half Day Release	19 Snow Make-up Day (if needed) Juneteenth	20 First Day of Summer
21 Father's Day	22	23 Youth Art Drop-off for Shoreline Arts Festival 4-7 pm at Shoreline Community College Room 1402	24	25	26	27 Shoreline Arts Festival
28 Shoreline Arts Festival	29	30	1	2	3	4
5	6	 <p>SHORELINE PUBLIC SCHOOLS</p> <p>18560 1st Ave. NE Shoreline, WA 98155 Phone: 206.393.6111 Fax: 206.393.4204 shorelineschools.org</p>    				

June Notes:

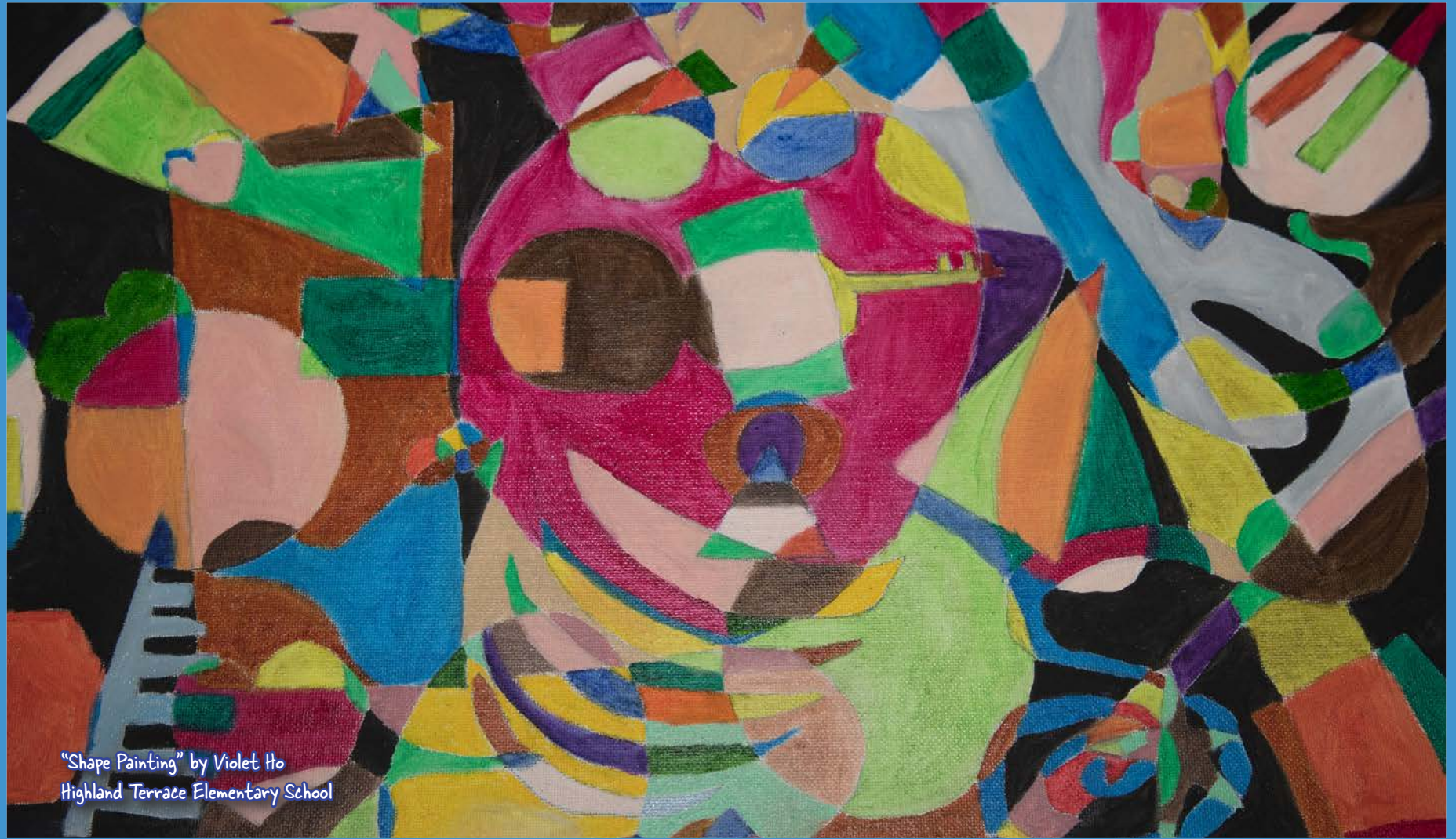
MAY

S	M	T	W	T	F	S
					1	2
3	4	5	6	7	8	9
10	11	12	13	14	15	16
17	18	19	20	21	22	23
24	25	26	27	28	29	30
31						

JULY

S	M	T	W	T	F	S
			1	2	3	4
5	6	7	8	9	10	11
12	13	14	15	16	17	18
19	20	21	22	23	24	25
26	27	28	29	30	31	

Attendance Matters
On Time, Every Day
#ShorelineEveryDay



"Shape Painting" by Violet Ho
Highland Terrace Elementary School

July

*"The artist sees what others only
catch a glimpse of."*

-Leonardo da Vinci

SUNDAY MONDAY TUESDAY WEDNESDAY THURSDAY FRIDAY SATURDAY

July Notes:

28	29	30	1	2	3	4 Independence Day
5	6	7	8	9	10	11
12	13	14	15	16	17	18
19	20	21	22	23	24	25
26	27	28	29	30 Eid-al-Adha thru 7/31	31	1

JUNE

S	M	T	W	T	F	S
	1	2	3	4	5	6
7	8	9	10	11	12	13
14	15	16	17	18	19	20
21	22	23	24	25	26	27
28	29	30				

AUGUST

S	M	T	W	T	F	S
						1
2	3	4	5	6	7	8
9	10	11	12	13	14	15
16	17	18	19	20	21	22
23	24	25	26	27	28	29
30	31					

SHORELINE

PUBLIC SCHOOLS
 18560 1st Ave. NE
 Shoreline, WA 98155
 Phone: 206.393.6111
 Fax: 206.393.4204
shorelineschools.org



Attendance Matters
 On Time, Every Day
#ShorelineEveryDay

2	3
---	---



"Elder" by Liam Crouch
Kellogg Middle School



"Once Upon a Time" by Jasmine Harrick
Shorecrest High School



"Beta Fish" by Stella Claire Sullivan
Cascade K-8 community School

August

"The main thing is to be moved, to love, to hope, to tremble, to live."

-Auguste Rodin

SUNDAY	MONDAY	TUESDAY	WEDNESDAY	THURSDAY	FRIDAY	SATURDAY
26	27	28	29	30	31	1
2	3	4	5	6	7	8
9	10	11	12	13	14	15
16	17	18	19	20	21	22
23	24	25	26	27	28	29
30	31					

August Notes:

JULY						
S	M	T	W	T	F	S
			1	2	3	4
5	6	7	8	9	10	11
12	13	14	15	16	17	18
19	20	21	22	23	24	25
26	27	28	29	30	31	

SEPTEMBER						
S	M	T	W	T	F	S
		1	2	3	4	5
6	7	8	9	10	11	12
13	14	15	16	17	18	19
20	21	22	23	24	25	26
27	28	29	30			

SHORELINE 18560 1st Ave. NE
Shoreline, WA 98155
Phone: 206.393.6111
Fax: 206.393.4204
shorelineschools.org




Attendance Matters
On Time, Every Day
#ShorelineEveryDay

Important Information Inside

Inside this calendar is the Application for Free or Reduced Price Meals and Student Rights and Responsibilities Handbook



"The Nature Table" by Madeleine Scheidt
Meridian Park Elementary School

Non-Discrimination Notice

Shoreline Public Schools provides Equal Educational and Employment Opportunity without regard to race, creed, color, national origin, sex, disability, sexual orientation, gender expression or identity, religion, age, veteran or military status, use of a trained dog to guide or service animal by a person with a disability, and provides equal access to the Boy Scouts and other designated youth groups.

The District complies with all applicable state and federal laws and regulations in all district programs, courses, activities, including extra-curricular activities, services, access to facilities, etc.

Shoreline Public Schools offers classes in many Career and Technical Education (CTE) program areas under its open admissions policy. Specifically, the Shoreline Public Schools offers admissions based on selective criteria in classes (such as Advanced Placement CTE programs that require a prerequisite) through a separate application process that is non-discriminatory. For more information about the application process and particular course offerings, contact the admissions office at Shorecrest High School 206.393.4286 or Shorewood High School 206.393.4372.

English language proficiency is not an element of the admissions and participation requirements for career and technical education classes. This notification can be provided in the appropriate language for communities of national origin by contacting 206.393.4365. Inquiries regarding compliance procedures should be directed to Shoreline Public Schools, 18560 1st Ave. N.E., Shoreline, WA 98155. The Title IX Officer and Compliance Coordinator for State Law (RCW 28A.640/28A.642) with overall responsibility for monitoring and ensuring compliance is Darlene Mendoza Gonzales, 206.393.4114. The ADA Compliance Officer and Section 504 Compliance Officer is Amy Vujovich, 206.393.4117.

This calendar is published by the Public Information Office, Shoreline Public Schools, 18560 1st Ave. N.E., Shoreline, WA 98155
Phone: 206.393.4412, TTY 206.393.3386

Modifications to school district printed communications to meet the needs of individuals with disabilities may be obtained by contacting the Public Information Office.